



TAA 
COMPLIANT

BOne

Impressive Capability with Incredible Value

Improved
**Speeds &
Wi-Fi**



**Enterprise
Software
Features**

Separate devices
into VLANs
Multiple SSIDs
WLAN Controller

**Robust &
Reliable
Connectivity**



Great
Value



Easy Integration with **Starlink**

- Bond multiple Starlink connections together
- Load Balance your Starlink with other internet services (5G/LTE, Cable, Fiber, FWA)
- Optimize your network with additional features requested specifically by Starlink



Made for **Fixed Wireless Access (FWA)**

- Designed for use with MSP 5G/LTE Gateway devices
 - | Bond various FWA together (AT&T / T-Mobile / Verizon)
 - | Load Balance different internet sources (Cable, Fiber, 5G/LTE)
- Tether your phone with Wi-Fi WAN or USB



Long Term **Support**

- Firmware is constantly updated to patch vulnerabilities and improve performance
- Futureproof your network as Peplink never ends support for older devices

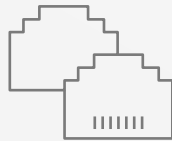




A Game Changer with Peplink App

- With a valid PrimeCare subscription, take advantage of all of SpeedFusion features without the need for an advanced network setup
- Easy to set up and use with our Companion App

Key B One Benefits



Dual WAN

architecture keeps you connected even when one of your Internet lines goes down

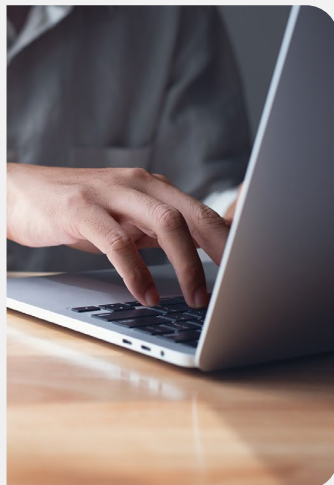


SpeedFusion

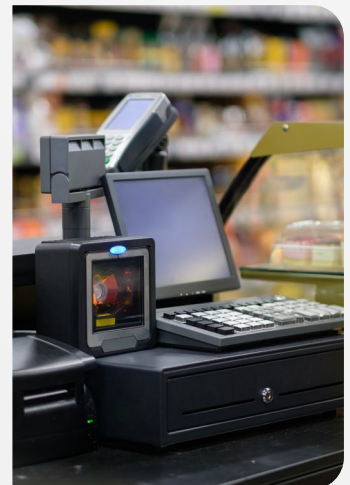
technology seamlessly bonds multiple Internet connections into one more reliable Internet feed

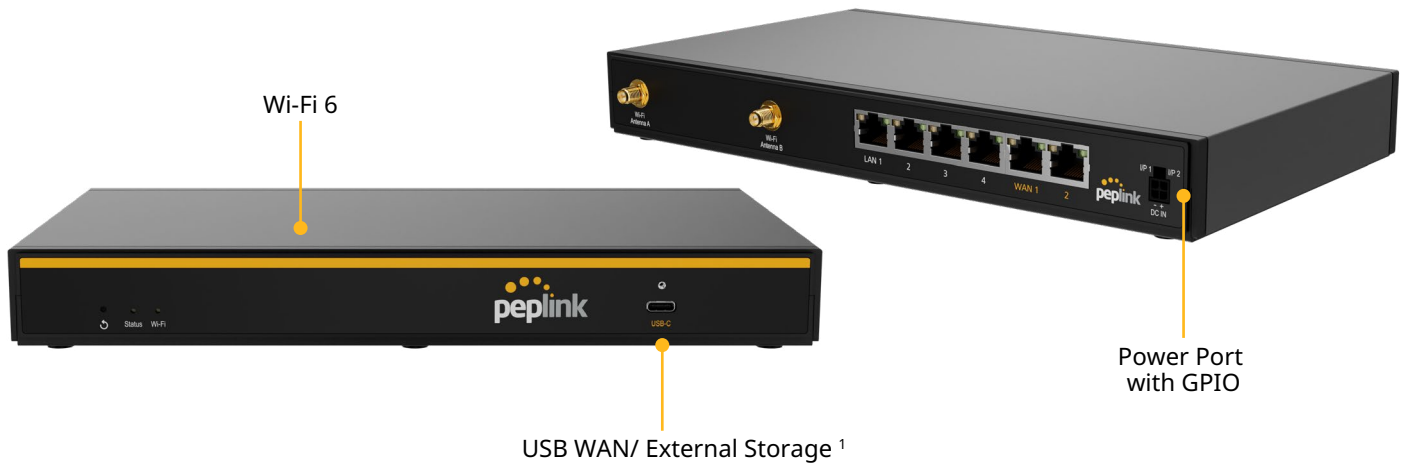
Use Cases

ENTERPRISE BRANCHES



RETAIL





Specifications

| | | | |
|--|--|------------------------------|---|
| WAN Interface | 2x 10/100/1000M Ethernet 1x USB-C Interface | Antenna Connectors | 2x RP-SMA Wi-Fi Antenna Connectors |
| LAN Interface | 4x 10/100/1000M Ethernet | Power Input | Power Port: 10V – 30V DC AC Adapter: AC Input 100V–240V / DC Output 12V |
| Wi-Fi Interface | Simultaneous Dual-Band (2.4GHz / 5GHz) Wi-Fi 6, 2X2 MIMO Wi-Fi WAN and/or AP | Power Consumption | 6W (nominal), 15W (max. without USB-C output ⁵) |
| SpeedFusion Features | Hot Failover ² / Smoothing ² / Bandwidth Bonding ² | Dimension | 10.31 x 6.33 x 1.31 inches / 262 x 161 x 33.5mm |
| Number of SpeedFusion VPN Peers | 2 / 5 / 10 / 20 ³ | Weight | 1.6 pounds / 727 grams |
| Router Throughput | 1Gbps | Operating Temperature | -40° – 113°F / -40° – 45°C |
| SpeedFusion VPN Throughput | | Humidity | 10% – 90% (non-condensing) |
| - No Encryption | 400 Mbps | Certification | FCC, CE, RoHS |
| - 256-bit AES | 200 Mbps | Package Content | 1x B One 2x Dual Band Wi-Fi Antennas 1x 12V 3A 4 Pin Power Supply (ACW-672) |
| Recommended Users | 1-150 | Warranty | 1-Year Limited Warranty |
| AP Controller | Standard | | |
| Maximum Number of AP Supported | 30 / 50 ⁴ | | |

¹ Requires LIC-DOC license and firmware 8.5.2 or above to enable Docker.

² Requires a PrimeCare subscription, complimentary for the first year.

³ 5 SpeedFusion VPN Peers are enabled with PrimeCare Subscription. 10 or 20 SpeedFusion VPN peers can be enabled with software license (PVN-LC-10 and PVN-LC-20).

⁴ Available with licence add-on (AP-LC-50).

⁵ USB-C Output : 5V at 2A can be delivered to power the MAX Adapter or other USB dongles for USB WAN.

Ordering Information

| Product Code | Regions |
|--------------|---------|
| B-ONE-T-PRM | Global |

Featured Add-on

| Product Code | Description |
|---------------------|---|
| PRM-A-1Y / PCP-A-1Y | PrimeCare A / PrimeCare+ A (1-Year) |
| PRM-A-2Y / PCP-A-2Y | PrimeCare A / PrimeCare+ A (2-Year) |
| PRM-A-4Y / PCP-A-4Y | PrimeCare A / PrimeCare+ A (4-Year) |
| ACW-791 | Peplink 4-Pin to USB-C Power Cable |
| ACW-634 | 10ft DC Power Cable |
| ACW-341 | Dual-Band Indoor Wi-Fi Omni Antenna in Black (RP-SMA) |

Deep Dive

| | | | |
|------------------------------|--|-------------------------------|--|
| Software | Pepwave MAX Firmware | Networking | NAT and IP Forwarding Static Routes Port Forwarding Many to One, One to One NAT NAT Pool SIP ALG, H.323 ALG UPnP, NAT-PMP |
| WAN | Support for PPPoE, Static IP, DHCP WAN Link Health Check Bandwidth Allowance Monitor Support for Dynamic DNS services | | |
| LAN | DHCP Server for LAN Clients Extended DHCP Option DHCP Reservation DNS Proxy for LAN Clients VLAN on LAN Support | AP Controller | Support for Pepwave AP Series Auto AP Discovery Auto AP Firmware Management AP Profile Configuration Wi-Fi Usage Statistics |
| Security | Stateful Firewall DoS Prevention Web Blocking | Captive Portal Support | Support for Wired and Wireless LAN clients Support RADIUS Authentication Time and Usage Quotas on Open Access Mode Built-in Customizable Splash Page |
| Complete VPN Solution | SpeedFusion VPN/SpeedFusion <ul style="list-style-type: none"> • Hot Failover • Site-to-Site VPN • 256-bit AES Encryption • Pre-shared Key Authentication • Dynamic Routing X.509 Certificate Support IPsec VPN (Network-to-Network) | Device Management | Web Administrative Interface Command Line Interface InControl Cloud Management Email Notification Active Client & Session Lists Bandwidth Usage Statistics Syslog Service SNMP v1, v2c and v3 |
| Advanced QoS | Individual Bandwidth Limit Application Prioritization <ul style="list-style-type: none"> • SIP, HTTPS, VPN QoS • Custom Application QoS | | |